



## I/O Logger box

The new CAREL solution for the supervision of small systems

# Everything under control, quickly and simply!

The integration of CAREL's consolidated platforms, including supervisors and programmable devices, provides a new, reliable, top-of-the-range monitoring system for small-scale systems, such as cold rooms or small supermarkets.

Up to twenty input channels: temperature, pressure and humidity probes and system status inputs, which can be combined freely as needed.

Simple yet powerful, I/O Logger box inherits all of the features of the PWPRO family, such as data logging, alarm management, and simple and direct access to information, while extending the featured further by introducing the ability to manage up to twenty native inputs using a single stand-alone device.

### Plug & Play



I/O Logger box is a single, compact solution, ready to install and use. Simply connect the probes and/or wiring

associated with system status (alarms, doors, defrost, etc.) and everything is ready to start monitoring the system.

### Easy to install



Pre-wired and extremely simple and fast to install. Just four screws are needed to mount the unit directly where

needed. Vertical design allows flexible installation even in tight spaces, such as next to a cold room door.

### Easy to configure and use

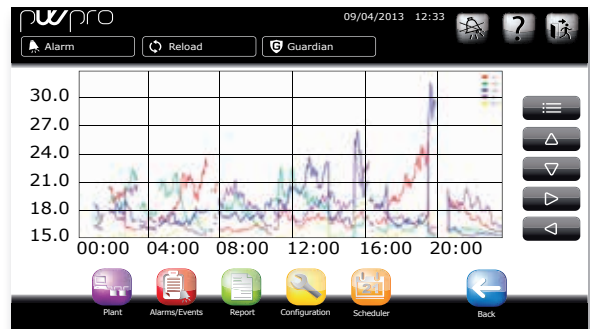


The device is already programmed and pre-configured, meaning the system can be up-and-running in a few simple steps. The large

display, fast navigation and extreme simplicity of the menus provide access to the desired information quickly and intuitively.



Main page



Graph



Line configuration

| Device | Alarm                  |
|--------|------------------------|
| pCO 1  | High Temperature Alarm |
| pCO 2  | High Temperature Alarm |
| pCO 3  | Low Temperature Alarm  |
| pCO 4  | General Alarm          |
| pCO 5  | Alarm                  |

Alarm list

# Complete integration. Visibility 24 hours a day

I/O Logger box allows direct connection of twenty inputs, which can be associated with alarms and relay outputs, as well as the connection, even subsequently, of up to 15 additional system devices, so as to ensure complete integration.

A unique, flexible and expandable system, designed to monitor and manage all the information generated by the system.

Quick installation  
on new and existing  
systems

## Information always available



All critical system parameters, such as temperatures or alarm signals, are saved so as to generate graphs

that can be immediately viewed via the touch screen. The data can also be downloaded to a USB drive or emailed for future reference. Constant and preventive control to ensure continuous system optimisation and better quality control of preserved products.

## Prompt alarm management



The tool immediately reports any system abnormalities and provides all the information needed to ensure fast response

times. Alarm notifications, configurable delay times, management via relay, acknowledgement and reset are just some of the possible options to give the user peace of mind and ensure optimum product preservation.

## Remote access



I/O Logger box can be connected to the internet to provide authorised users total control of the system, at any time and from

anywhere. Using a simple internet connection and a browser on a fixed or mobile device, system maintenance or optimisation operations are possible, for continuous and maximum peace of mind even when not on-site.

## Versatility



Temperature, pressure, humidity, door status, defrost status are the typical system parameters monitored. I/O

Logger box provides thirteen different combinations of parameters for maximum configuration freedom and flexibility. The mode that best fits the specific scenario can be selected simply and easily, avoiding time-consuming configurations.



## Operating modes

Possible combinations of site parameters:

| Operating mode | Description  |
|----------------|--|
| 1              | 10 NTC probes  |
| 2              | 10 PT1000 probes   |
| 3              | 5 NTC probes and 5 digital inputs  |
| 4              | 5 PT1000 probes and 5 digital inputs   |
| 5              | 10 digital inputs  |
| 6              | 4 NTC probes, 4 x 4-20 mA pressure probes and 2 digital inputs                                 |
| 7              | 4 PT1000 probes, 4 x 4-20 mA pressure probes and 2 digital inputs                              |
| 8              | 4 NTC probes, 2 x 0.5-4.5 V pressure probes, 2 x 0-5 V pressure probes and 2 digital inputs    |
| 9              | 4 PT1000 probes, 2 x 0.5-4.5 V pressure probes, 2 x 0-5 V pressure probes and 2 digital inputs |
| 10             | 4 NTC probes, 4 x 4-20 mA humidity probes and 2 digital inputs                                 |
| 11             | 4 PT1000 probes, 4 x 4-20 mA humidity probes and 2 digital inputs                              |
| 12             | 4 NTC probes, 4 x 0-5 V humidity probes and 2 digital inputs                                   |
| 13             | 4 PT1000 probes, 4 x 0-5 V humidity probes and 2 digital inputs                                |

\* In the twenty-channel version, each C.pCO can be configured in a different mode by doubling the options

## Models available

I/O Logger box is available in two versions that differ only in terms of the maximum number of channels managed:

| P/N          | Description                                    |
|--------------|--|
| PW3C000TP100 | PLANTWATCH IO LOGGER BOX 10 UNIVERSAL CHANNELS |
| PW3C000TP200 | PLANTWATCH IO LOGGER BOX 20 UNIVERSAL CHANNELS |

## Technical data

| Characteristic                     | Description  |
|------------------------------------|--|
| Main display                       | 7" touchscreen, 800 x 480 WVGA, 64 k colors            |
| Power supply                       | 230 V 1 ~ + N+E 50/60 Hz Max 50 W                      |
| Weight                             | 7 - 7.2 kg   |
| Operating / storage temperature    | -20 to 60°C / -20 to 70°C                              |
| Overvoltage protection             | Class II   |
| Dimensions                         | 380 x 300 x 120 mm                                     |
| Ingress protection                 | IP56   |
| Acoustic signal                    | Buzzer   |
| Interfaces                         | 2 LAN ports (internal switch)<br>2 RS485 ports         |
| Protocols                          | Modbus®, CAREL   |
| Variable sampling times            | 30 sec, 1 min, 3 min, 5 min, 15 min (default = 15 min) |
| Stored data time                   | 1 year if sample rate > 14 min                         |
| Storage media                      | 1 USB  |
| Maximum number of devices          | 15   |
| Maximum number of logged variables | 150  |

### Headquarters ITALY

**CAREL INDUSTRIES HQs**  
Via dell'Industria, 11  
35020 Brugine - Padova (Italy)  
Tel. (+39) 0499 716611  
Fax (+39) 0499 716600  
carel@carel.com

### Sales organization

CAREL Alfaco Polska - [www.carel.pl](http://www.carel.pl)  
CAREL Asia - [www.carel.com](http://www.carel.com)  
CAREL Australia - [www.carel.com.au](http://www.carel.com.au)  
CAREL Central & Southern Europe - [www.carel.com](http://www.carel.com)  
CAREL Deutschland - [www.carel.de](http://www.carel.de)  
CAREL China - [www.carel-china.com](http://www.carel-china.com)  
CAREL France - [www.carelfrence.fr](http://www.carelfrence.fr)  
CAREL Korea - [www.carel.com](http://www.carel.com)  
CAREL Ibérica - [www.carel.es](http://www.carel.es)  
CAREL Italy - [www.carel.it](http://www.carel.it)

CAREL India - [www.carel.in](http://www.carel.in)  
CAREL Mexicana - [www.carel.mx](http://www.carel.mx)  
CAREL Middle East - [www.carel.com](http://www.carel.com)  
CAREL Nordic - [www.carel.com](http://www.carel.com)  
CAREL Russia - [www.carelrussia.com](http://www.carelrussia.com)  
CAREL South Africa - [www.carelcontrols.co.za](http://www.carelcontrols.co.za)  
CAREL Sud America - [www.carel.com.br](http://www.carel.com.br)  
CAREL Thailand - [www.carel.com](http://www.carel.com)  
CAREL U.K. - [www.careluk.co.uk](http://www.careluk.co.uk)  
CAREL U.S.A. - [www.carelusa.com](http://www.carelusa.com)

### Affiliates

CAREL Czech & Slovakia - [www.carel.com](http://www.carel.com)  
CAREL Ireland - [www.carel.com](http://www.carel.com)  
CAREL Japan - [www.carel-japan.com](http://www.carel-japan.com)  
CAREL Turkey - [www.carel.com.tr](http://www.carel.com.tr)